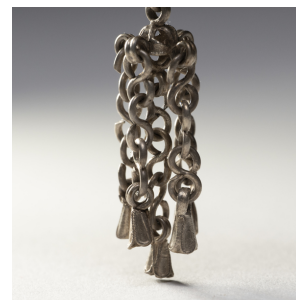

PAGODA RED



ETCHED FLORAL CHARM RING

\$88

c. 1900 • China • Silver • Collection #LUBRING_RR

W: 2.5" D: 0.75" H: 0.5"

Dated to the late 19th century, this silver charm ring was crafted by the Miao peoples of the Guizhou province and was believed to protect the wearer from bad luck and malevolent spirits. The ring is etched with an elegant flower blossom, hammered with small indentations for added texture. The face of the ring is strung with a round charm of a brocade ball, from which hang four short chains ending in petite bell-shaped charms.

Ring size is adjustable. All jewelry sales are final. No refunds or exchanges.



1740 W. Webster Ave., Chicago, IL 60614 • 773-235-1188 • info@pagodared.com

PAGODARED.COM