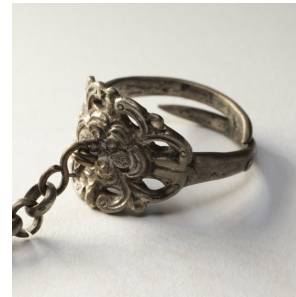


---

# PAGODA RED

---



## FLORAL CHARM RING

**\$88**

c. 1900 • China • Silver • Collection #LUBRING\_TT

W: 2.0" D: 1.0" H: 1.0"

Dated to the late 19th century, this silver charm ring was crafted by the Miao peoples of the Guizhou province and was believed to protect the wearer from bad luck and malevolent spirits. The ring is decorated in relief with a flower blossom surrounded by leaves and curling tendrils. A chain hangs from the center of the flower, ending in a small repoussé charm of a gourd or melon, a symbol for a large and prosperous family.

Ring band is adjustable. All jewelry sales are final. No refunds or exchanges.



1740 W. Webster Ave., Chicago, IL 60614 • 773-235-1188 • [info@pagodared.com](mailto:info@pagodared.com)

PAGODARED.COM