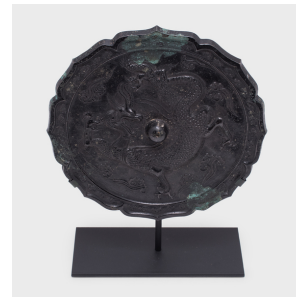
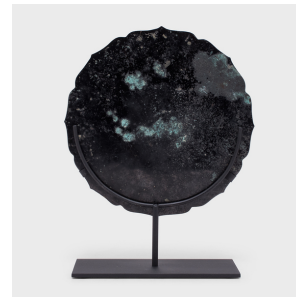
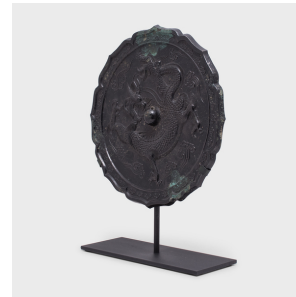

PAGODA RED



CELESTIAL DRAGON BRONZE MIRROR

\$3,880

c. 1900 • China • Bronze • Collection #CFC136

W: 11.5" D: 4.0" H: 15.0"

This antique Chinese mirror is cast of bronze in the Tang-dynasty style, with a lobed rim of eight flower petals, each filled with small cloud motifs. The front of the mirror is cast with a sinuous mythical dragon flying amid clouds. A round knob at the center takes the place of the dragon's flaming pearl, an emblem of the sun, of the moon, of balance, and of power. The back is flat and would have been highly polished and coated with mercury or silver for a reflective surface.

Such mirrors were used within the sleeping quarters and were elevated upon wooden mirror stands, often ornately carved and highly decorated. Continued...



1740 W. Webster Ave., Chicago, IL 60614 • 773-235-1188 • info@pagodared.com

PAGODARED.COM

PAGODA RED

CELESTIAL DRAGON BRONZE MIRROR

This elegant bronze mirror is dated to the late 19th century and shows its age with pitted wear, minor verdigris oxidation, and a beautiful dark patina. We've elevated this mirror on a custom steel mount for display as a captivating sculptural object.

From the collection of Frances and Gary Comer.

Additional Dimensions:

Mirror: 11.5"W x 11.

