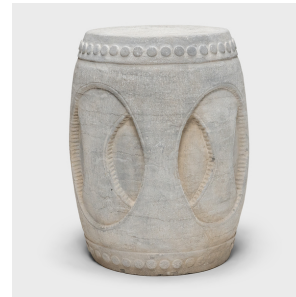


---

# PAGODA RED

---



## INTERLOCKING STONE DRUM

**\$4,280**

China • Limestone • Collection #TLC045G

H: 19.0" Dia: 14.5"

Drum-form stools such as this were traditionally used in gardens and outdoor pavilions where upper class scholars read, wrote, gathered for discussion and, in general, developed their inner sensibilities. This contemporary example was carved from a solid block of limestone with an intriguing design of interlocking oval cut-outs, creating the illusion of two nested stools. The top and bottom are ringed with raised studs, a design meant to imitate the iron rivets that fasten stretched hide across a drum head. Anchoring its surroundings with the permanence of stone furniture, the limestone drum is ideal indoors or out as a stool, side table or garden seat. Continued...



1740 W. Webster Ave., Chicago, IL 60614 • 773-235-1188 • [info@pagodared.com](mailto:info@pagodared.com)

**PAGODARED.COM**

---

# PAGODA RED

---

## INTERLOCKING STONE DRUM

Additional Dimensions:

Diameter of Seat: 11.



1740 W. Webster Ave., Chicago, IL 60614 • 773-235-1188 • [info@pagodared.com](mailto:info@pagodared.com)

**PAGODARED.COM**