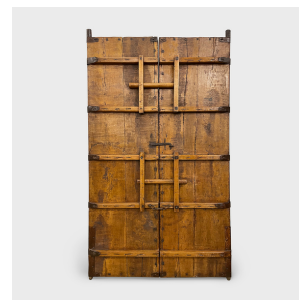
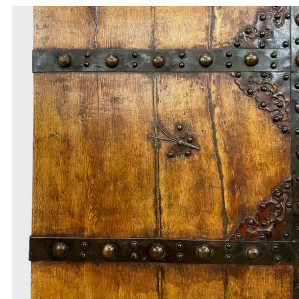
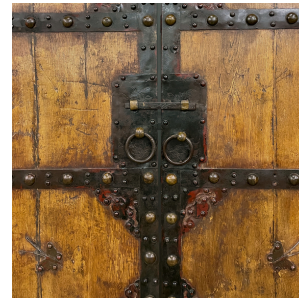

PAGODA RED



PAIR OF COURTYARD DOORS WITH IRON BUTTERFLIES

\$6,980

c. 1850 • Northern China, China • Northern Elmwood, Iron, Brass • Collection #CMCL074

W: 62.0" D: 4.5" H: 103.0"

This imposing set of doors dates to the mid-19th century and once enclosed the inner courtyard of a Qing-dynasty home in northern China. The double doors are crafted of northern elm (yumu), a common hardwood appreciated for its strength, warm coloring and expressive grain.

The fronts are reinforced with iron bands studded with brass hobnails and decorated with hard-worked iron plates with a foliated design. A square lock plate secures two round door pulls and a simple door latch, engraved with an everlasting knot, lotus blossoms, and ornamental koi. Little iron butterflies flit across the front, auspicious symbols of blessings, happiness and longevity. Continued...



1740 W. Webster Ave., Chicago, IL 60614 • 773-235-1188 • info@pagodared.com

PAGODARED.COM

PAGODA RED

PAIR OF COURTYARD DOORS WITH IRON BUTTERFLIES

The monumental doors appear to have been originally finished with a layer of red brown lacquer - now only subtle traces remain.

Deaccessioned from the MacLean Collection of Asian Art.

This item is available upon request only. Please inquire to schedule in-person viewing.

Additional Dimensions:

Door Fronts: 31"W x 4.5"D x 103"H

Upper Posts: 2"Dia x 3.5"H

Lower Posts: 1.5"Dia x 1.

