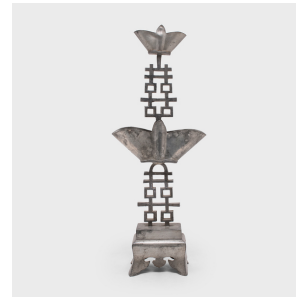

PAGODA RED



PAIR OF DOUBLE HAPPINESS PEWTER CANDLE STANDS

\$980

c. 1920 • China • Pewter • Collection #CFC133

W: 7.0" D: 3.0" H: 18.5"

These early 20th century pewter candle stands convey blessings of joy and good fortune. The stem of each stand is shaped as the 囍 symbol for "double happiness," a traditional motif of marriage and conjugal bliss. Each of the dishes is shaped as an ingot, a symbol of wealth and a pun for "it will be as you wish." Minimally decorated yet wonderfully sculptural, the stands make a charming accent to a bookcase, console, or table setting.

From the collection of Frances and Gary Comer.

Candle pricket missing from one stand.



1740 W. Webster Ave., Chicago, IL 60614 • 773-235-1188 • info@pagodared.com

PAGODARED.COM