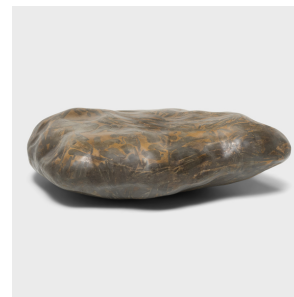
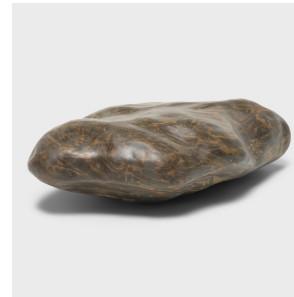


---

# PAGODA RED

---



## BAMBOO LEAF PUDDINGSTONE BOULDER

**\$1,880**

Shandong, China • Stone • Collection #J224\_5

W: 28.0" D: 19.0" H: 7.5"

A well-chosen stone is the focal point of both a traditional Chinese garden and a scholar's studio - evoking the complexities of nature and inspiring creative thought. This sculptural boulder is formed of a conglomerate rock commonly termed as puddingstone. This particular example has a dense, iron-rich matrix studded with long, thin stones resembling bamboo leaves. The unusual stone has been polished to preserve its natural contours and highlight the stone's painterly appearance.



1740 W. Webster Ave., Chicago, IL 60614 • 773-235-1188 • [info@pagodared.com](mailto:info@pagodared.com)

PAGODARED.COM