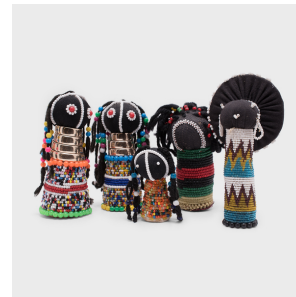

PAGODA RED



BEADED NDEBELE TOY DOLL

\$88

Mid-20th Century • Cotton, Bead, Wood • Collection #CFC560D

W: 3.5" D: 2.5" H: 4.75"

A rare imported commodity, glass beads have been a symbol of wealth and importance in south African cultures for centuries, and were exclusively distributed by the region's leader. As beads become gradually more accessible throughout the 19th century, they began to displace the organic materials used in traditional art and attire. This colorful example of African beadwork is attributed to the Ndebele people of South Africa and was likely made as a child's toy or a souvenir. Continued...



1740 W. Webster Ave., Chicago, IL 60614 • 773-235-1188 • info@pagodared.com

PAGODARED.COM

PAGODA RED

BEADED NDEBELE TOY DOLL

These traditional dolls are made with cylindrical wooden bodies, wrapped in cotton and highly decorated with metal rings, natural materials, and dense beadwork.



1740 W. Webster Ave., Chicago, IL 60614 • 773-235-1188 • info@pagodared.com

PAGODARED.COM