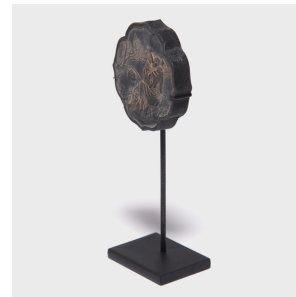


---

# PAGODA RED

---



## AFTERNOON TEA INK STICK

**\$180**

c. 1850 • Northern China, China • Ink, Steel • Collection #CMKH122

W: 2.25" D: 1.5" H: 5.75"

Along with the inkstone, brush, and paper, the inkstick was essential to a scholar's practice of calligraphy and brush painting. Made of soot and animal glue that was pressed into a mold to harden, these solid inks were sometimes infused with incense or essences of clove, sandalwood or other fragrant oils. Shaped into a cartouche, this inkstone is embossed with the image of a scholar taking his tea in an artfully landscaped garden. To reconstitute the ink, the scholar would grind the inkstick against an inkstone with a small quantity of water to produce liquid ink.



1740 W. Webster Ave., Chicago, IL 60614 • 773-235-1188 • [info@pagodared.com](mailto:info@pagodared.com)

PAGODARED.COM