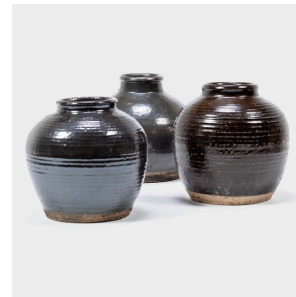


---

# PAGODA RED

---



## APOTHECARY WINE JAR

**\$338**

c. 1900 • Zhejiang, China • Ceramic • Collection #BJGG027C

H: 9.25" Dia: 9.0"

A warm brown glaze clings to the textured surface of this wine jar, lingering on subtle ridges ringing the body to create a pattern of light and dark. Crafted in the early 20th century, the jar was once used in a Qing-dynasty apothecary to store wines infused with medicinal herbs, as evidenced by its narrow neck and interior glaze. Contrasted by an unfinished base, the irregular glaze has a lustrous finish marked by pitted wear that gives the pot fantastic character.



1740 W. Webster Ave., Chicago, IL 60614 • 773-235-1188 • [info@pagodared.com](mailto:info@pagodared.com)

PAGODARED.COM

---

# PAGODA RED

---

## APOTHECARY WINE JAR

Additional Dimensions:

Opening: 3.5"



1740 W. Webster Ave., Chicago, IL 60614 • 773-235-1188 • [info@pagodared.com](mailto:info@pagodared.com)

**PAGODARED.COM**