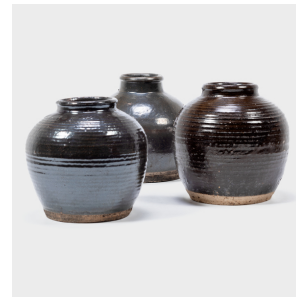

PAGODA RED



APOTHECARY WINE JAR

\$338

c. 1900 • Zhejiang, China • Ceramic • Collection #BJGG027D

H: 8.75" Dia: 8.5"

An almost iridescent dark blue glaze clings to the textured surface of this wine jar, lingering on subtle ridges ringing the body to create a pattern of light and dark. Crafted in the early 20th century, the jar was once used in a Qing-dynasty apothecary to store wines infused with medicinal herbs, as evidenced by its narrow neck and interior glaze. Contrasted by an unfinished base, the irregular glaze exhibits a rich range of colors and pitted wear that gives the pot fantastic character.



1740 W. Webster Ave., Chicago, IL 60614 • 773-235-1188 • info@pagodared.com

PAGODARED.COM

PAGODA RED

APOTHECARY WINE JAR

Additional Dimensions:

Opening: 3.5"



1740 W. Webster Ave., Chicago, IL 60614 • 773-235-1188 • info@pagodared.com

PAGODARED.COM