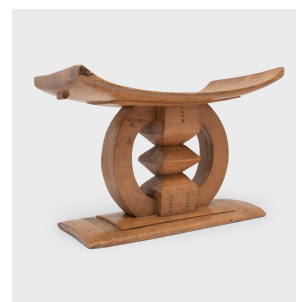
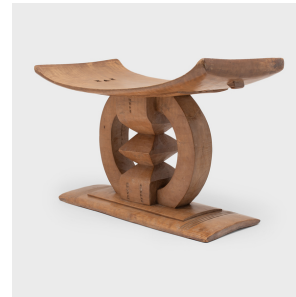

PAGODA RED



ASHANTI STOOL

\$1,480

20th Century • Ghana • Wood • Collection #CJPF033

W: 22.0" D: 11.0" H: 14.75"

An indicator of status and family, stools play an integral role in traditional Ashanti culture. Believed to be the resting place for a person's soul, a stool is given to a child when they first learn to crawl and used in personal milestones throughout the rest of their life. Carved from a solid block of wood, each stool has a rectangular base and a distinctive curved seat supported by a central column carved in geometric or figural forms.



1740 W. Webster Ave., Chicago, IL 60614 • 773-235-1188 • info@pagodared.com

PAGODARED.COM