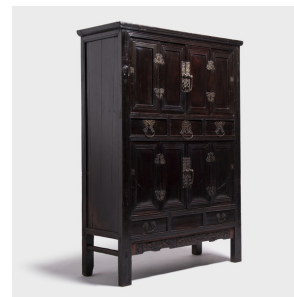

PAGODA RED



AUSPICIOUS BUTTERFLY CABINET

\$4,980

c. 1850 • Northern China, China • Northern Elmwood • Collection #CJK001

W: 53.0" D: 21.5" H: 74.75"

Skilled Qing Dynasty cabinetmakers elevated joinery to a new artistic level. The beauty of this cabinet is not only its highly polished wood or precise carving, but in the complex joinery just beneath the surface. This cabinet was crafted long ago out of solid wood but is in remarkable shape. The original hardware is wrought in incredible detail—some pieces are shaped like butterflies, which symbolize long life, beauty, and elegance.

Top chamber top shelf: 47"W x 18"D x 13"H

Top chamber bottom shelf: 47"W x 18.5"D x 10.25"H

Top drawers: 12"W x 18.5"D x 4"H

Bottom chamber top shelf: 47"W x 18. Continued...



1740 W. Webster Ave., Chicago, IL 60614 • 773-235-1188 • info@pagodared.com

PAGODARED.COM

PAGODA RED

AUSPICIOUS BUTTERFLY CABINET

5"D x 10.75"H

Bottom chamber bottom shelf: 47"W x 19"D x 10.25"H

Hidden chamber: 15.25"W x 19.5"D x 5.5"H

Bottom drawers: 12.25"W x 18.5"D x 3.

