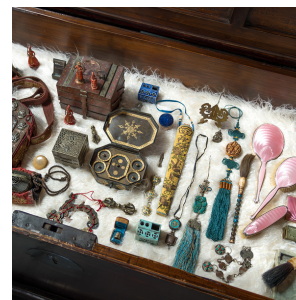


---

# PAGODA RED

---



## BHUTANESE KOMA FASTENER

**\$88**

20th Century • Alloy, Glass • Collection #CFC661

W: 5.5" D: 1.5" H: 0.5"

These openwork cast alloy brooches are a contemporary example of Bhutanese cloak fasteners known as koma. Worn by women to secure a traditional garment known as kira, the fasteners were secured to one's clothing by simple hooks affixed to the backs of either end. The brooches are faced with cut glass beads and brushed with gold pigment for a mixed metal finish. Cast to a round medallion form, the openwork design of each brooch recalls the Buddhist wheel of life, a symbol of the universe, creation, and eternity.

From the collection of Frances and Gary Comer. Continued...



1740 W. Webster Ave., Chicago, IL 60614 • 773-235-1188 • [info@pagodared.com](mailto:info@pagodared.com)

PAGODARED.COM

---

# PAGODA RED

---

## BHUTANESE KOMA FASTENER

Missing one glass bead on the center brooch.

