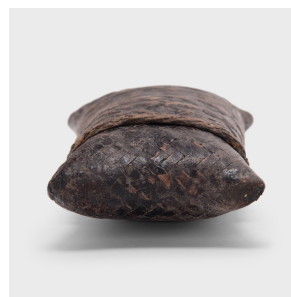
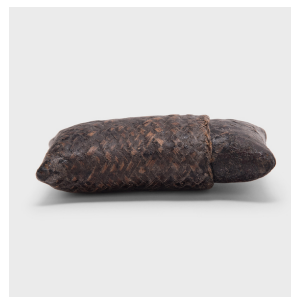

PAGODA RED



BLACK LACQUER WOVEN GLASSES CASE

\$148

c. 1900 • Southeast Asia • Bamboo • Collection #CFC516

W: 3.25" D: 1.5" H: 5.5"

Dated to the early 20th-century, this petite box was woven of thin bamboo strips and finished with a putty-like substance known as thayo, comprised of black lacquer and sawdust. The box is woven into two pieces that overlap to form a rectangular container. Likely used as a case for an instrument or a pair of glasses, the humble box is a work of art in itself and a beautiful example of a traditional craft.

From the collection of Frances and Gary Comer.



1740 W. Webster Ave., Chicago, IL 60614 • 773-235-1188 • info@pagodared.com

PAGODARED.COM