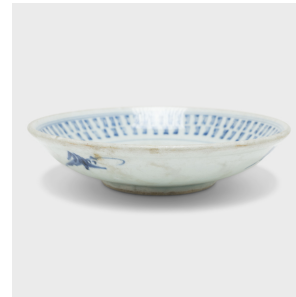

PAGODA RED



PROVINCIAL BLUE AND WHITE PLATE

\$428

c. 1850 • China • Ceramic, Glaze • Collection #CMRC087

H: 2.5" Dia: 10.25"

This mid-19th century footed plate is decorated in the blue-and-white style with a pattern of stamped geometric and curvilinear motifs. At the center of the plate is a starburst medallion filled with floral meanders and enclosed by a border of unglazed ceramic. The sloping sides are patterned with graphic, abstract shapes, stamped with vibrant cobalt blue color against a cool white underglaze. Once used daily for tea, rice, and soup, this large provincial plate is ideal today as a serving dish or catch-all bowl.



1740 W. Webster Ave., Chicago, IL 60614 • 773-235-1188 • info@pagodared.com

PAGODARED.COM