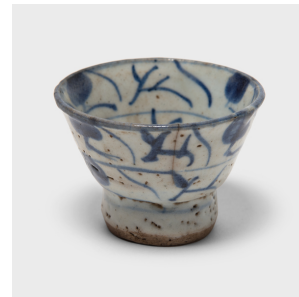
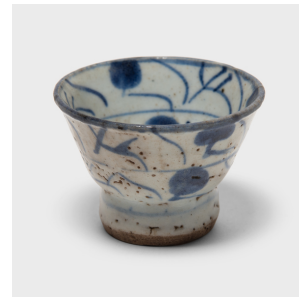
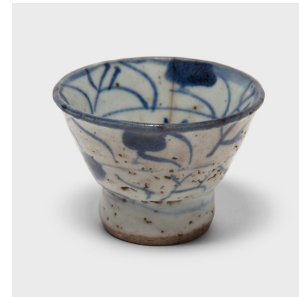

PAGODA RED



BLUE AND WHITE STEM CUP

\$48

c. 1900 • Southern China, China • Ceramic • Collection #CBH073

H: 2.75" Dia: 2.0"

The blue and white design of this ceramic teacup was painted in a muted, grey pigment, only to be transformed to a rich, cobalt blue by the fiery heat of the kiln. The flared cup is elevated by a cylindrical stem foot and painted with gestural brushstrokes for a floral effect. Retaining the immediacy of the artist's brushwork, the early 20th century cup has an offhand spontaneity befitting of an everyday object.



1740 W. Webster Ave., Chicago, IL 60614 • 773-235-1188 • info@pagodared.com

PAGODARED.COM