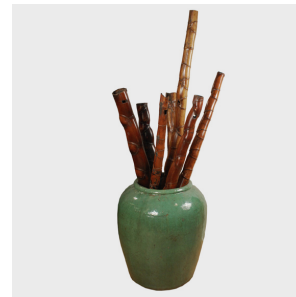
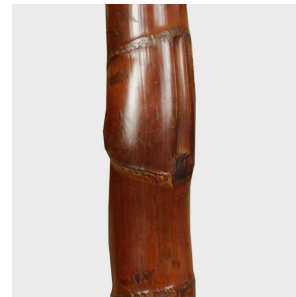
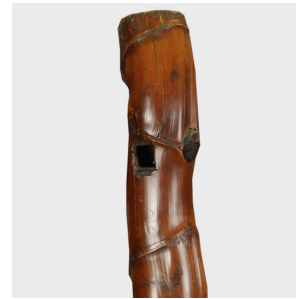

PAGODA RED



BUDDHA BELLY BAMBOO PIPE

\$880

c. 1850 • China • Materials, Bamboo • Collection #PPP001C

W: 3.5" D: 3.25" H: 49.5"

This unique sculptural bamboo pipe was made in 19th century China, roughly three hundred years after European sailors introduced tobacco to China. The shaft looks too long to hold comfortably, but the length helps filter the smoke. It is handcrafted from a special type of bamboo (*Bambusa ventricosa*), commonly called “Buddha belly bamboo”. The unusual form is created by artisans who regulate the water and root space to train the bamboo to grow with the characteristic bulges that have inspired its colorful name.



1740 W. Webster Ave., Chicago, IL 60614 • 773-235-1188 • info@pagodared.com

PAGODARED.COM