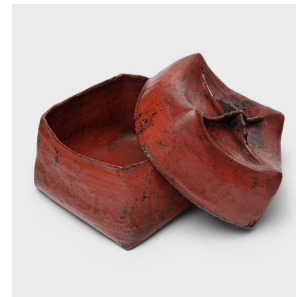

PAGODA RED



BURMESE CINNABAR LACQUER BOX

\$980

c. 1900 • Burma • Bamboo, Lacquer • Collection #CLBR021

W: 9.5" D: 10.0" H: 7.0"

Dated to the early 20th-century, this small woven box is a timeless example of Burmese lacquerware. Made of woven bamboo strips, the box is coated in a putty-like substance known as thayo, comprised of lacquer and sawdust, and finished with an even layer of cinnabar-red lacquer. Used for general storage of small items, the small box adds rustic texture to modern interiors, now richly aged with subtle crazing and a timeworn patina.

Minor losses to lacquer finish.



1740 W. Webster Ave., Chicago, IL 60614 • 773-235-1188 • info@pagodared.com

PAGODARED.COM