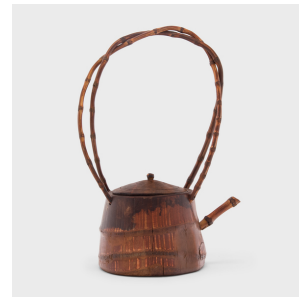
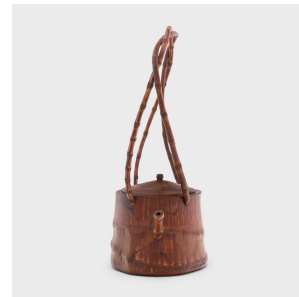


---

# PAGODA RED

---



## BAMBOO TEAPOT WITH ARCHED HANDLE

**\$980**

c. 1900 • China • Materials, Bamboo • Collection #CFC521B

W: 8.75" D: 5.5" H: 13.5"

Tea drinking has been an integral part of Chinese culture for centuries, resulting in a wide range of social customs and material traditions. In addition to tea leaves, water, and heat, the art of drinking tea (chayi) calls for a variety of teaware and utensils - both practical and decorative.

This sculptural teapot dates to the late Qing dynasty and crafted entirely of bamboo. A tall bent handle surmounts the teapot, shaped from two thin bamboo branches twisted together. Appealing to the popular appreciation for organic forms, the body of the teapot was minimally worked, preserving the natural patterning of the wood grain. Continued...



1740 W. Webster Ave., Chicago, IL 60614 • 773-235-1188 • [info@pagodared.com](mailto:info@pagodared.com)

**PAGODARED.COM**

---

**PAGODA  
RED**

---

**BAMBOO TEAPOT WITH ARCHED HANDLE**

From the collection of Frances and Gary Comer.



1740 W. Webster Ave., Chicago, IL 60614 • 773-235-1188 • [info@pagodared.com](mailto:info@pagodared.com)

**PAGODARED.COM**