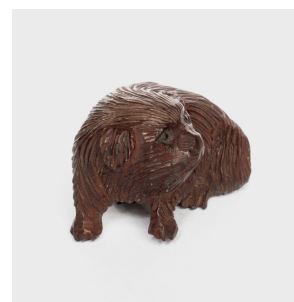
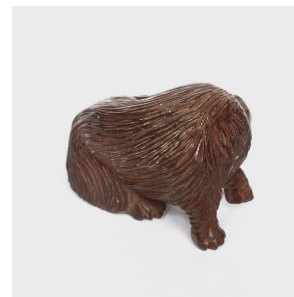
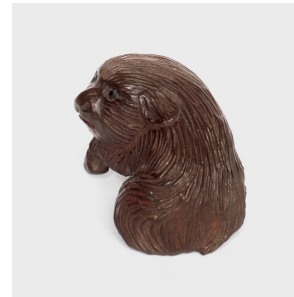

PAGODA RED



CARVED NETSUKE OF A DOG

\$118

c. 1900 • Japan • Wood • Collection #AA011

W: 1.75" D: 1.0" H: 1.0"

This delightful carving of a dog looks like a charm but actually served a practical purpose, fastening a small pouch to a kimono sash. Although tiny and designed with this specific function, each fob-like netsuke was carefully selected to reflect the taste and interest of the wearer and, like this terrier, often exquisitely crafted with inventive forms. This highly collectible netsuke tenderly captures the dog's demure demeanor.



1740 W. Webster Ave., Chicago, IL 60614 • 773-235-1188 • info@pagodared.com

PAGODARED.COM