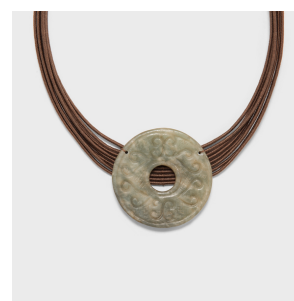
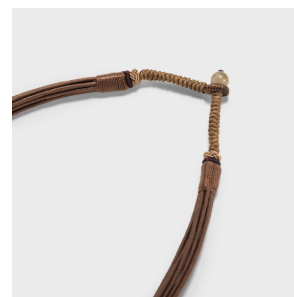

PAGODA RED



CELADON JADE BI DISC NECKLACE

\$288

Shanghai, China • Jade • Collection #CJLDN509SZ

W: 5.25" D: 0.25" H: 8.5"

Created by an artisan in Shanghai, this beautiful statement necklace features an early 20th-century jade pendant, likely once looped over robe fastenings as a decorative charm. Valued for its rarity and lustrous appearance, jade has been thought to symbolize excellence and purity of human virtue. Worn as jewelry or as a protective charm, the stone was thought to imbue a person with a clear mind and pure spirit, and to guard against evil spirits or illness. This jade charm is carved in the form of a bi disc, a symbol connected with heaven and its spiritual properties. Strung with intricately hand-knotted cord, this jade bi disc etched with abstract patterns becomes a striking piece of contemporary jewelry.

Continued...



1740 W. Webster Ave., Chicago, IL 60614 • 773-235-1188 • info@pagodared.com

PAGODARED.COM

**PAGODA
RED**

CELADON JADE BI DISC NECKLACE

All jewelry sales are final. No refunds or exchanges.



1740 W. Webster Ave., Chicago, IL 60614 • 773-235-1188 • info@pagodared.com

PAGODARED.COM