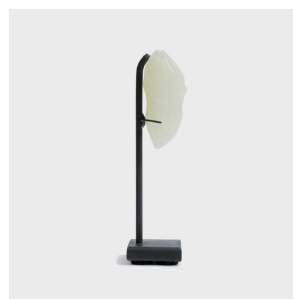
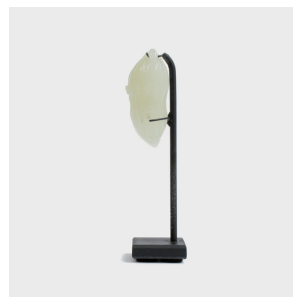

PAGODA RED



CELADON JADE MELON TOGGLE

\$980

c. 1900 • China • Jade • Collection #CMKH083

W: 1.25" D: 1.0" H: 3.75"

This finely crafted jade toggle is carved in the form of a melon with a leafy vine. Melons and gourds are auspicious Chinese symbols of virility because they contain many seeds. Like other finely carved toggles, such a charm would have been prized as a waist charm.



1740 W. Webster Ave., Chicago, IL 60614 • 773-235-1188 • info@pagodared.com

PAGODARED.COM