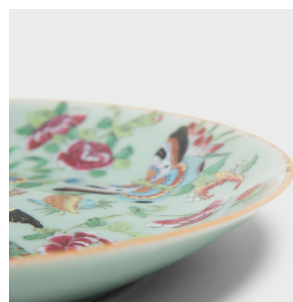
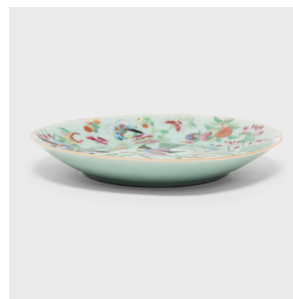

PAGODA RED



FAMILLE ROSE CELADON PLATE

\$248

Mid-20th Century • China • Porcelain • Collection #CFC079

H: 1.5" Dia: 10.25"

During the 18th century, Europeans provided an eager market for Chinese export porcelain, especially the colorful and fanciful ware known as "famille rose." Named for a palette of opaque overglaze enamels that favored roses and pinks, famille rose porcelain ware was crafted with the same technical virtuosity as imperial porcelain but designed for Western tastes.

This unique plate is cloaked in a celadon glaze, described in ancient texts as the "full moon dyed with spring water. The plate is further decorated in a hand-painted famille rose pattern of flora and fauna, including lotus blossoms, peonies, fruits, butterflies, and pheasants. Continued...



1740 W. Webster Ave., Chicago, IL 60614 • 773-235-1188 • info@pagodared.com

PAGODARED.COM

PAGODA RED

FAMILLE ROSE CELADON PLATE

Reminiscent of imperial wares, this colorful plate makes for a delightful addition to a table setting.



1740 W. Webster Ave., Chicago, IL 60614 • 773-235-1188 • info@pagodared.com

PAGODARED.COM