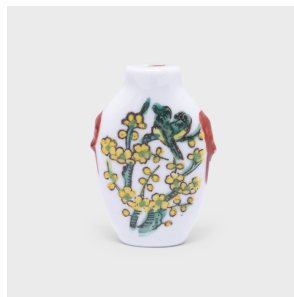
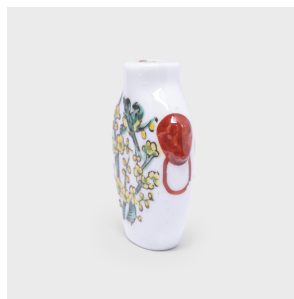

PAGODA RED



PLUM BLOSSOM SNUFF BOTTLE

\$88

20th Century • China • Ceramic, Enamel • Collection #CESB049

W: 1.5" D: 0.75" H: 2.25"

A mixture of finely powdered tobacco, herbs, and spices, snuff was introduced to China in the 17th century by Western diplomats. Initially reserved for ranking members of Qing-dynasty society, the practice provided an opportunity to display one's refined aesthetic through collectible snuff bottles.

This decorative snuff bottle has a simple ceramic form and a colorful finish of overglaze enamels atop white glaze. The bottle has an oval shape, with flattened sides and rounded edges. The shoulders are accented with a door knocker motif and the sides are painted with birds amid plum blossom branches, symbols of longevity and winter. Continued...



1740 W. Webster Ave., Chicago, IL 60614 • 773-235-1188 • info@pagodared.com

PAGODARED.COM

**PAGODA
RED**

PLUM BLOSSOM SNUFF BOTTLE

The original cap and spoon have been lost.



1740 W. Webster Ave., Chicago, IL 60614 • 773-235-1188 • info@pagodared.com

PAGODARED.COM