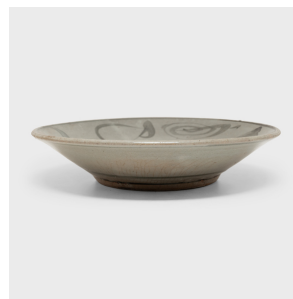

PAGODA RED



PROVINCIAL BLUE AND WHITE PLATE

\$288

c. 1850 • China • Ceramic • Collection #CJKA025B

H: 2.5" Dia: 11.0"

Calligraphic sweeps bring this 19th-century footed plate to life, brushed atop a muted blue-grey glaze that cloaks the simple ceramic form. Once used daily for tea, rice, and soup, this expressive example of Chinese blue and white ceramics can today be used as a decorative tabletop centerpiece or serving plate.



1740 W. Webster Ave., Chicago, IL 60614 • 773-235-1188 • info@pagodared.com

PAGODARED.COM