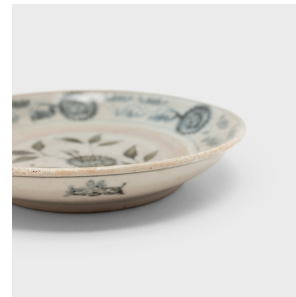

PAGODA RED



BLUE AND WHITE CHRYSANTHEMUM PLATE

\$188

c. 1900 • China • Porcelain, Glaze • Collection #CMRC023

H: 1.5" Dia: 7.5"

This petite ceramic dish dates to the early 20th century and is glazed in the blue-and-white style with a charming floral design. Brushed with indigo-grey atop a cool white underglaze, the plate is painted with round chrysanthemum blossoms and trailing leaves, a motif of autumn and longevity. Once used for serving food and drink, we love this small saucer as a decorative centerpiece or catch-all dish.



1740 W. Webster Ave., Chicago, IL 60614 • 773-235-1188 • info@pagodared.com

PAGODARED.COM