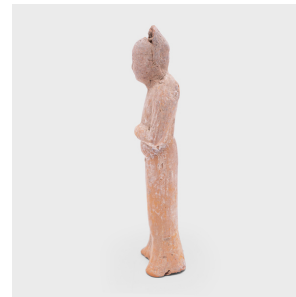
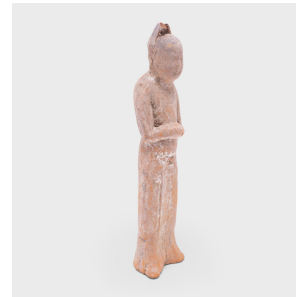

PAGODA RED



MALE MINGQI SPIRIT ATTENDANT

\$580

Unknown • China • Ceramic • Collection #CESB045

W: 2.25" D: 1.75" H: 8.75"

Molded of earthenware, this petite sculpture is a type of centuries-old burial figurine known as *míngqì*. Such model figures were placed in tombs of individuals with high status to ensure a safe journey to the afterlife. Meant to depict the pleasures of daily life, common burial figures were warriors, dancers, male and female figures and animals.

This *míngqì* is of a male attendant dressed in a long gown, hands folded in front and topped by a towering coiffure or headdress. The sculpture is coated with a pale glaze and has now weathered from age, revealing the original ceramic form. Continued...



1740 W. Webster Ave., Chicago, IL 60614 • 773-235-1188 • info@pagodared.com

PAGODARED.COM

PAGODA RED

MALE MINGQI SPIRIT ATTENDANT

The front of the headdress has chipped off.



1740 W. Webster Ave., Chicago, IL 60614 • 773-235-1188 • info@pagodared.com

PAGODARED.COM