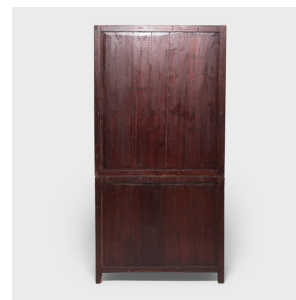
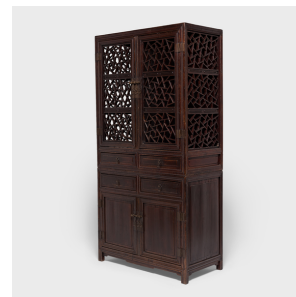
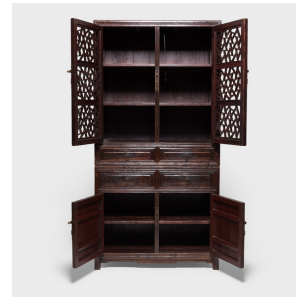

PAGODA RED



CRACKED ICE LATTICE CABINET

\$20,380

c. 1850 • Jiangsu, China • Cedar, Brass • Collection #DVA001

W: 43.5" D: 22.0" H: 86.5"

This elegant 19th-century tall cabinet was crafted by an artisan in Suzhou, China's "Garden City," and features doors fitted with complex cracked ice lattice panels. Cracked ice lattice, or "binglei," was a popular 17th-century Chinese decorative motif admired for its asymmetry. The lattice has been brilliantly assembled piece by piece with mortise and tenon joinery, executed with puzzle-like precision. The cabinet's clean lines balance the irregular lattice work, simply adorned with subtle brass hardware. Continued...



1740 W. Webster Ave., Chicago, IL 60614 • 773-235-1188 • info@pagodared.com

PAGODARED.COM

**PAGODA
RED**

CRACKED ICE LATTICE CABINET

With four drawers and ample storage space, this statement piece is perfect as a kitchen cabinet or bookshelf.



1740 W. Webster Ave., Chicago, IL 60614 • 773-235-1188 • info@pagodared.com

PAGODARED.COM