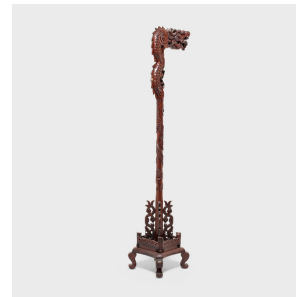
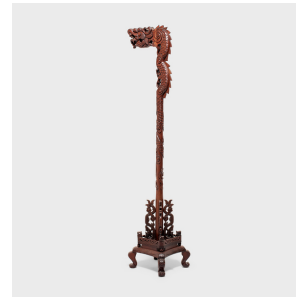

PAGODA RED



DRAGON LANTERN STAND

\$1,280

China • Wood • Collection #CJCH002

W: 14.5" D: 20.0" H: 73.0"

This elaborately carved lamp stand is designed to elevate a hanging lantern or oil lamp to better illuminate a room. Certain lanterns were carried on the end of a pole to light the way through courtyards and corridors, then hung from a ceiling hook or lamp stand when back indoors. This wooden lantern stand is crafted with a square base with short cabriole legs, a round central post, and a large hook in the form of a scaly, serpentine dragon. Additional dragons are seen throughout the densely carved base, along with bats, fu lions, and other auspicious motifs.

Lantern stand is hardwired with one socket and in working condition. Continued...



1740 W. Webster Ave., Chicago, IL 60614 • 773-235-1188 • info@pagodared.com

PAGODARED.COM

PAGODA RED

DRAGON LANTERN STAND

Additional Dimensions:

Base: 14.5"W x 14.



1740 W. Webster Ave., Chicago, IL 60614 • 773-235-1188 • info@pagodared.com

PAGODARED.COM