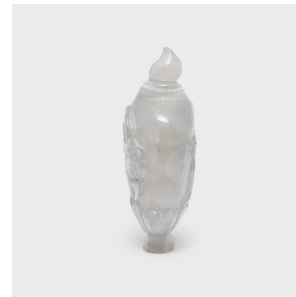
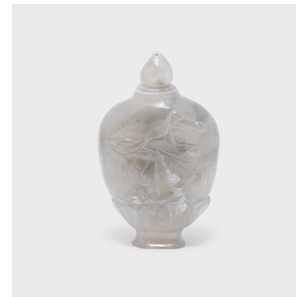
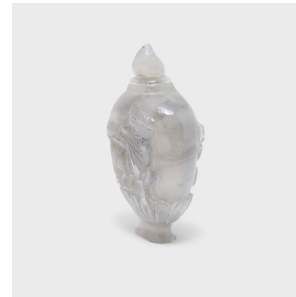


---

# PAGODA RED

---



## GREY JADE SNUFF BOTTLE

**\$148**

20th Century • China • Jade • Collection #CESB002

W: 1.5" D: 0.75" H: 2.25"

A mixture of finely powdered tobacco, herbs, and spices, snuff was introduced to China in the 17th century by Western diplomats. Initially reserved for ranking members of Qing-dynasty society, the practice provided an opportunity to display one's refined aesthetic through collectible snuff bottles. This petite snuff bottle is carved of translucent grey jade, shaped with a flat, tapered body, high shoulders, and a narrow base carved with flower petals. One side is carved with a long-tailed bird amid flowers, and the other with a young boy holding an ingot, a motif for wealth and success.



1740 W. Webster Ave., Chicago, IL 60614 • 773-235-1188 • [info@pagodared.com](mailto:info@pagodared.com)

PAGODARED.COM