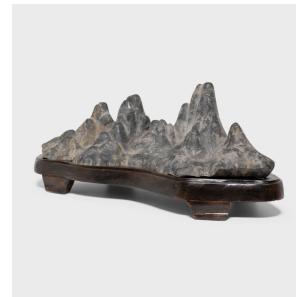
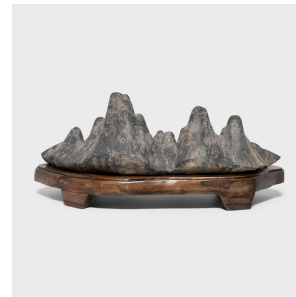

PAGODA RED



MOUNTAIN RANGE SCHOLARS' ROCK

\$2,680

c. 1900 • China • Limestone, Wood • Collection #CMPZ010

W: 29.0" D: 13.0" H: 12.5"

Known as gongshi, or scholars' rocks, lingbi stones such as this were fixtures of the scholars' studio, displayed as sources of beauty and creative inspiration. Meditating on the stone's intriguing, suggestive form, the scholar found inspiration in the textured surface as a microcosm of the universe.

This dark grey scholars' rock suggests a mountainous shan shui landscape of peaks and valleys. The sloping hills end in gentle, rounded peaks, softened by the elements and perhaps accentuated by light filing when mounted. Best viewed from the front, this stone would traditionally be considered "one-sided," though it offers a unique perspective from all sides. Continued...



1740 W. Webster Ave., Chicago, IL 60614 • 773-235-1188 • info@pagodared.com

PAGODARED.COM

PAGODA RED

MOUNTAIN RANGE SCHOLARS' ROCK

The mountainous rock is elevated by a simple carved wooden base stained to a dark brown color.

The sculpture has visible repairs to cracks in the stone.

