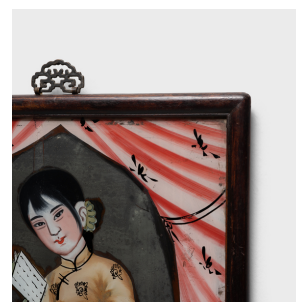
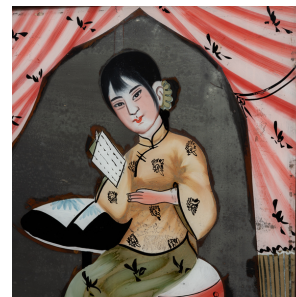

PAGODA RED



REVERSE GLASS PAINTING OF A YOUNG WOMAN

\$680

c. 1900 • Northern China, China • Paint, Wood, Metal • Collection #CRJI001

W: 15.0" D: 1.0" H: 23.0"

Popularized during the Qing dynasty, reverse glass painting requires an artist to essentially work backwards, starting with details and shading before adding color and form. Lending the finished work a subtle three-dimensional effect, this exacting technique doesn't allow for any corrections, and is only revealed to its full effect when the glass pane is turned around.

With exquisite detail and sparkling color, this portrait of a young woman is a remarkable example of reverse glass painting. In this case, the delicate features of the woman's face and intricate patterning of her clothing and furniture were painted first, followed by the background and coloring. Continued...



1740 W. Webster Ave., Chicago, IL 60614 • 773-235-1188 • info@pagodared.com

PAGODARED.COM

PAGODA RED

REVERSE GLASS PAINTING OF A YOUNG WOMAN

The painting is set in its original hardwood frame and hangs from a decorative metal handle.



1740 W. Webster Ave., Chicago, IL 60614 • 773-235-1188 • info@pagodared.com

PAGODARED.COM