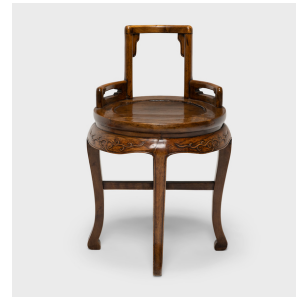

PAGODA RED



CHINESE LOW BACK LADY'S CHAIR

\$1,980

c. 1900 • China • Rosewood • Collection #CFC297B

W: 22.0" D: 22.0" H: 30.5"

Dated to the late 19th century, this petite ladies' chair combines the low, square back of traditional rose chairs with the round frame and cabriole legs of waisted display tables. The chair features an open back with shallow arms, curved to match the contours of the round seat. Favoring the inherent beauty of huali rosewood, the chair is decorated only by scrollwork on the apron and a beaded edge trimming each leg. Placed beside a vanity or accenting a parlor, this unusual seat elevates its surroundings with effortless sophistication.

From the collection of Frances and Gary Comer.



1740 W. Webster Ave., Chicago, IL 60614 • 773-235-1188 • info@pagodared.com

PAGODARED.COM

PAGODA RED

CHINESE LOW BACK LADY'S CHAIR

Additional Dimensions:

Seat Diameter: 18"

Seat Height: 20"



1740 W. Webster Ave., Chicago, IL 60614 • 773-235-1188 • info@pagodared.com

PAGODARED.COM