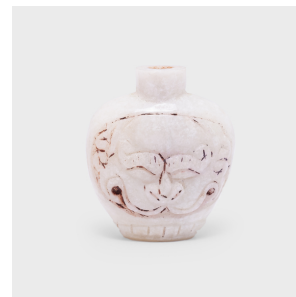
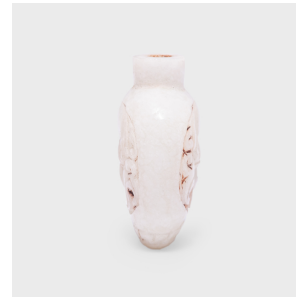


---

# PAGODA RED

---



## FU DOG STONE SNUFF BOTTLE

**\$128**

c. 1900 • China • Hardstone • Collection #CESB052

W: 2.0" D: 0.75" H: 2.25"

A mixture of finely powdered tobacco, herbs, and spices, snuff was introduced to China in the 17th century by Western diplomats. Initially reserved for ranking members of Qing-dynasty society, the practice provided an opportunity to display one's refined aesthetic through collectible snuff bottles.

This early 20th century snuff bottle is hand-carved from solid block of opaque white hardstone. The bottle has a flattened shape with high shoulders, rounded sides, and a tapered base. Carved into either side is the grinning face of a mythical fu lion dog. Continued...



1740 W. Webster Ave., Chicago, IL 60614 • 773-235-1188 • [info@pagodared.com](mailto:info@pagodared.com)

PAGODARED.COM

---

# PAGODA RED

---

## FU DOG STONE SNUFF BOTTLE

Known as shizi, this mythical creature is thought to offer protection from malevolent spirits and misfortune.

The original cap and spoon have been lost.

