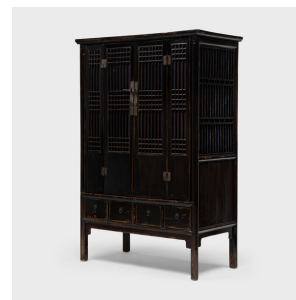


---

# PAGODA RED

---



## BLACK LACQUER LATTICE CABINET

**\$5,880**

c. 1850 • China • Northern Elmwood, Lacquer, Fabric • Collection #CJGA001

W: 50.0" D: 27.0" H: 77.0"

With clean lines and a darkly lacquered finish, this square corner cabinet celebrates the restraint of classic Chinese furniture forms. Dated to the mid-19th century, the tall cabinet is crafted of elmwood with traditional mortise-and-tenon joinery. The cabinet doors are double-hinged and paneled with open latticework of a minimalist grid structure, now backed with dark fabric for a more quiet presence. The expansive lacquered front is finished with the soft glimmer of its brass dagger-post lock plate and square hinges.

The impressive cabinet provides ample storage options, crafted with two interior shelves, four interior drawers, and four front-facing exterior drawers. Continued...



1740 W. Webster Ave., Chicago, IL 60614 • 773-235-1188 • [info@pagodared.com](mailto:info@pagodared.com)

PAGODARED.COM

---

# PAGODA RED

---

## BLACK LACQUER LATTICE CABINET

Likely originally used for everyday storage in a Qing dynasty home, the cabinet is ideal today as a statement wardrobe or linen cupboard.

A hole drilled into the back panel has been repaired.

### Additional Dimensions:

Top Shelf: 47"W x 21"D x 13"H

Middle Shelf: 47"W x 21"D x 22"H

Bottom Shelf: 47"W x 21"D x 7"H

Interior Drawers: 9.5"W x 17.5"D x 2.5"H

Exterior Drawers: 9.5"W x 17"D x 6."

