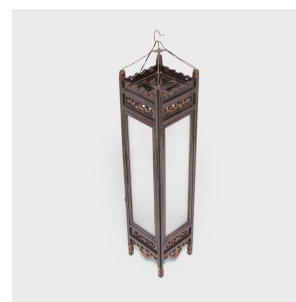
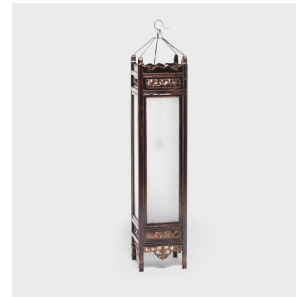

PAGODA RED



TALL BOOK LANTERN

\$4,780

c. 1900 • Fujian, China • Northern Elmwood, Lacquer, Frosted Glass • Collection #CAJ003B

W: 10.75" D: 10.75" H: 46.5"

This striking, elongated lantern once illuminated a 19th-century home in China's Fujian province. Placed on the floor or set upon a table top, the tall lantern would have lit the room by candlelight diffused through a paper or silk lining. The lantern has a beautiful elmwood frame with hand-carved, decorative scrollwork and a richly aged dark lacquer finish. Traces of gilt pigment accentuate the carved detail, once brightly colored to a dazzling gold.

The original lining has been replaced with removable frosted glass panels. The lantern has been wired for a single light bulb (100 watt max. Continued...



1740 W. Webster Ave., Chicago, IL 60614 • 773-235-1188 • info@pagodared.com

PAGODARED.COM

PAGODA RED

TALL BOOK LANTERN

) and fitted with a chain and dark brown canopy for hardwiring to a ceiling junction box. Chain and wire can easily be adjusted upon request.

Additional Dimensions:
With hook and chain: 54.



1740 W. Webster Ave., Chicago, IL 60614 • 773-235-1188 • info@pagodared.com

PAGODARED.COM