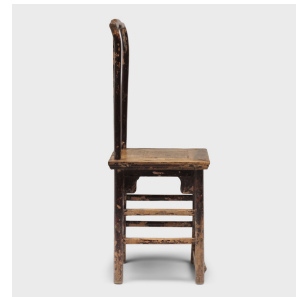
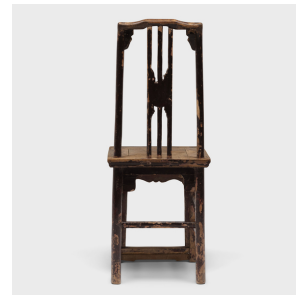
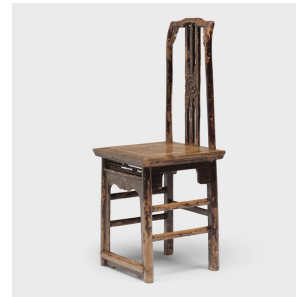

PAGODA RED



CHRYSANTHEMUM LADY'S CHAIR

\$2,280

c. 1800 • Shanxi, China • Paint, Northern Elmwood • Collection #ZHA039B

W: 16.75" D: 16.5" H: 42.5"

This charming lady's chair dates to the early 19th century and is an armless variation on the classic Chinese 'southern official's hat chair.' The side chair is crafted of elm (yumu) with mortise-and-tenon joinery and features a high, rectangular back, a waisted square seat and recessed legs linked by straight stretchers.

The tall back is delicate and open, shaped with a rounded, humpback top rail and a back yoke of three spindles and a relief carving of a chrysanthemum flower, a symbol of autumn and longevity. Continued...



1740 W. Webster Ave., Chicago, IL 60614 • 773-235-1188 • info@pagodared.com

PAGODARED.COM

PAGODA RED

CHRYSANTHEMUM LADY'S CHAIR

The front legs are further decorated with an openwork panel of geometric lattice and a cusped apron carved with botanical motifs. The chair's dark painted finish has worn beautifully with time, revealing the warm color of elmwood and imparting a soft, burnished texture.

