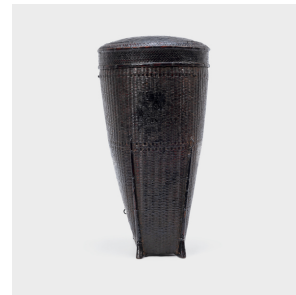

PAGODA RED



DARK LACQUER PACK BASKET

\$1,480

c. 1900 • Southeast Asia • Lacquer, Reed • Collection #CBH013

W: 9.75" D: 9.75" H: 18.25"

Basket making is an ancient and humble craft, but in the hands of a skilled weaver a simple willow basket can become a truly beautiful work of art. This tall, dark pack basket from southeast Asia wonderfully showcases the artisan's mastery of this craft. Reinforced by a wooden base, the basket is tightly woven of thin reeds in an even, rhythmic pattern. Any remaining gaps were then filled with lacquer to create a watertight seal and accentuate the twill patterning. The round lid is woven with a mesmerizing hexagonal pattern trimmed by a simple plait. Continued...



1740 W. Webster Ave., Chicago, IL 60614 • 773-235-1188 • info@pagodared.com

PAGODARED.COM

PAGODA RED

DARK LACQUER PACK BASKET

Loops fitted into the basket sides indicate it was designed to be slung on the back for transporting food and goods. Rich with character, the basket remains in remarkable condition - a testament to its craftsmanship.



1740 W. Webster Ave., Chicago, IL 60614 • 773-235-1188 • info@pagodared.com

PAGODARED.COM