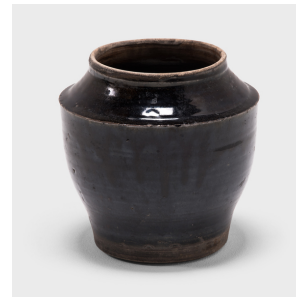

PAGODA RED



GLAZED PANTRY JAR

\$338

c. 1900 • Shanxi, China • Ceramic • Collection #BJGG068E

H: 8.75" Dia: 8.5"

A dark glaze coats the angular body of this squat kitchen vessel, pooling in the shallow ridges along its sides with subtle iridescence. The petite early 20th-century dish was once used for storing food in a Qing-dynasty kitchen, as evidenced by its interior glaze. Dotted with imperfections, the lustrous dark glaze gives this pantry jar a glassy appearance, contrasted by the unfinished base and lip. We love this petite vessel as a tabletop planter for a succulent or a single orchid.



1740 W. Webster Ave., Chicago, IL 60614 • 773-235-1188 • info@pagodared.com

PAGODARED.COM

PAGODA RED

GLAZED PANTRY JAR

Additional Dimensions:

Diameter of Opening: 5.5"



1740 W. Webster Ave., Chicago, IL 60614 • 773-235-1188 • info@pagodared.com

PAGODARED.COM