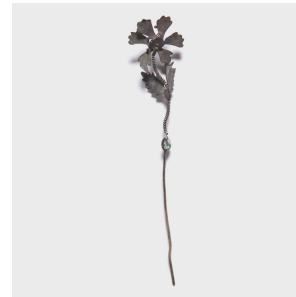

PAGODA RED



FLORAL ENAMELED HAIRPIN

\$98

c. 1850 • Northern China, China • Silver • Collection #NN008B

W: 1.0" D: 0.25" H: 4.75"

Although eyes were certainly drawn to the high, fan-shaped headdresses that Qing-dynasty women affixed to back of their heads, it was the finishing touch of a hairpin or two that completed the look. Attached to the front of a fine lady's coiffure, this elaborately designed silver hairpin branches a large flower blossom on a coiled spring that danced with each step. A true lady, however, was careful to not put too much sway to her hairpins, cultivating a walk that minimized the movement of her head.



1740 W. Webster Ave., Chicago, IL 60614 • 773-235-1188 • info@pagodared.com

PAGODARED.COM