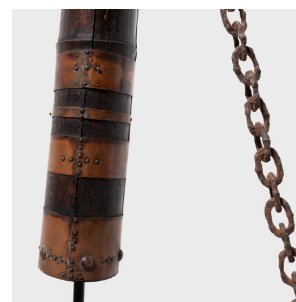
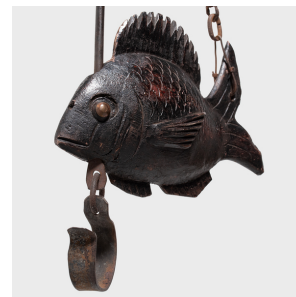
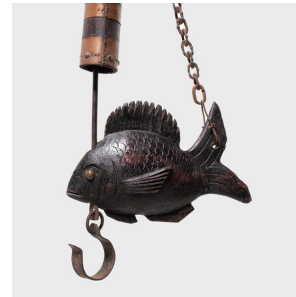

PAGODA RED



JAPANESE JIZAI KAGI HEARTH HOOK

\$1,680

c. 1900 • Japan • Wood, Bamboo, Iron • Collection #CSCH002

W: 14.0" D: 2.75" H: 59.0"

This Japanese hearth hook dates to the late 19th century and would have originally been used to suspend cooking pots above a traditional sunken floor hearth (irori). Known as a jizai kagi, these adjustable pothooks are usually comprised of an iron rod within a length of bamboo, ending in a carved wooden fish and an iron hook. In addition to adding decorative appeal, the carved fish functions as a lever, used to raise or lower a cooking pot out from the flames below. This traditional jizai kagi is in wonderful condition, well-preserved with all essential components and richly aged by a beautiful dark patina. Continued...



1740 W. Webster Ave., Chicago, IL 60614 • 773-235-1188 • info@pagodared.com

PAGODARED.COM

PAGODA RED

JAPANESE JIZAI KAGI HEARTH HOOK

Additional Dimensions:

Bamboo: 36.5"L x 2.25"Dia

Fish: 12"W x 2.75"D x 7.



1740 W. Webster Ave., Chicago, IL 60614 • 773-235-1188 • info@pagodared.com

PAGODARED.COM