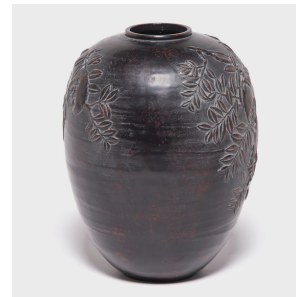
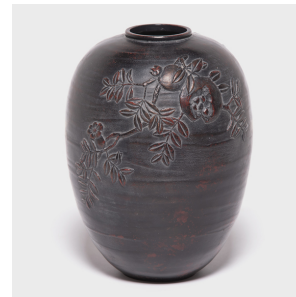
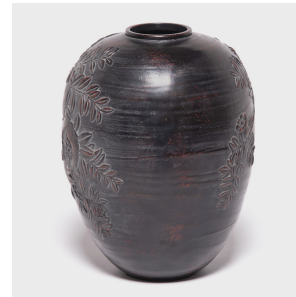


---

# PAGODA RED

---



## JAPANESE ZINC POMEGRANATE VASE

**\$1,680**

c. 1950 • Japan • Alloy • Collection #CCB022

H: 12.0" Dia: 9.0"

Traditional Japanese metalworkers are renowned for creating specialized alloys that elevated the art of refining, molding, and casting metals. An alloy of zinc and copper gives this metal vessel its rich dark color, intricately decorated with pomegranate branches, symbols of abundance and fertility. Set in high relief against the matte texture of this cast vessel, we love how the buffed surface of the raised design brings out its warmth.



1740 W. Webster Ave., Chicago, IL 60614 • 773-235-1188 • [info@pagodared.com](mailto:info@pagodared.com)

PAGODARED.COM