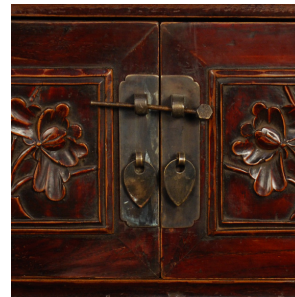

PAGODA RED



KANG CHEST WITH SCROLLED LEGS

\$1,880

c. 1900 • Henan, China • Northern Elmwood • Collection #BJA106

W: 40.75" D: 9.5" H: 13.5"

This early 20th century Chinese floral carved kang table, once used as part of a woman's sleeping quarters, is full of secret compartments. It has two doors and four drawers, and two more drawers hidden within the scrolled legs. The two legs end in a finely carved, lifted square scroll.



1740 W. Webster Ave., Chicago, IL 60614 • 773-235-1188 • info@pagodared.com

PAGODARED.COM

PAGODA RED

KANG CHEST WITH SCROLLED LEGS

Additional Dimensions

Small drawer: 7.75"W x 4.75"D x 1.75"H

Main chamber: 10.75"W x 8"D x 6.5"H

Leg drawer: 7.5"W x 1.74"D x 1.75"H

