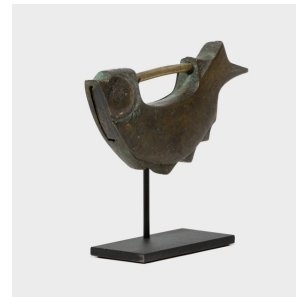
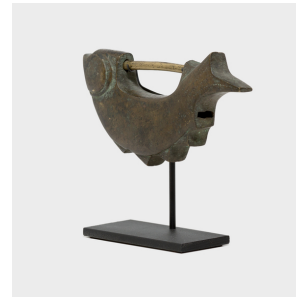

PAGODA RED



BRASS FISH LOCK ON MOUNT

\$480

c. 1900 • North Korea • Brass • Collection #CCDB005A

W: 6.75" D: 2.0" H: 6.0"

Like the sparkle of fish's scales, this 19th-century fish lock from North Korea once brightened the façade of a lacquered cabinet with a flash of golden brass. Demonstrating the aesthetic value placed on even the most everyday items, the handcrafted lock arches a fish into a gentle curve, finely etched with a pattern of layered scales. In Korean Buddhism, fish are revered as creatures thought to have their eyes open day and night, and thus make for watchful protectors of one's belongings. Placed on a custom steel mount, the lock is re-imagined as an elegant sculptural object.



1740 W. Webster Ave., Chicago, IL 60614 • 773-235-1188 • info@pagodared.com

PAGODARED.COM