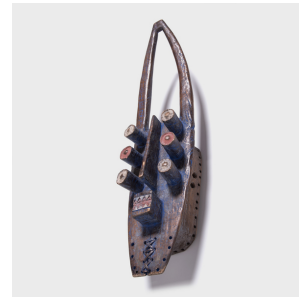

PAGODA RED



KRU MANY EYED MASK

\$1,180

c. 1900 • Ivory Coast • Paint, Wood • Collection #CAA1246

W: 8.0" D: 6.5" H: 32.5"

The Kru tribe believed in fear as a military strategy. They crafted "Many Eyed Masks" for their warriors to wear into battle. The terrifying visages made their warriors into monstrous foes. The sweeping horns, tubular eyes, and blocky jaw create a unique sculptural combination. The juxtaposition of shapes is one of the African aesthetics that inspired European colonialists as they developed Geometric Abstraction.



1740 W. Webster Ave., Chicago, IL 60614 • 773-235-1188 • info@pagodared.com

PAGODARED.COM