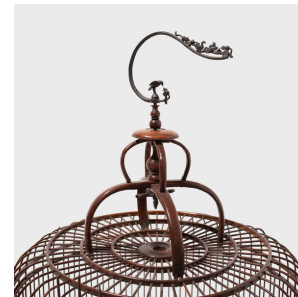
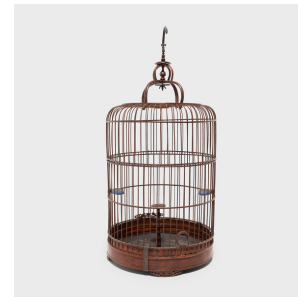
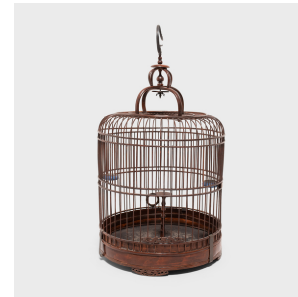

PAGODA RED



BARREL-FORM BIRDCAGE WITH BLUE GLAZED WATERPOTS

\$880

c. 1900 • China • Bamboo, Metal • Collection #CFC465

H: 31.5" Dia: 14.75"

This barrel-form birdcage dates to the late 19th century and was once home to a petite ornamental songbird. Bird-keeping was a popular pastime throughout the Qing dynasty and inspired its own material culture of beautiful cages and fine accessories. This cage is expertly assembled of thin bamboo rods and secured to a round removable base made of bent bamboo. The birdcage hangs from a large brass hook attached to the top, embellished with leafy vines and petite woodland creatures. A vertical post, stands tall in the center of the cage, carved to resemble bamboo and ending in a textured platform as a place to perch. Continued...



1740 W. Webster Ave., Chicago, IL 60614 • 773-235-1188 • info@pagodared.com

PAGODARED.COM

PAGODA RED

BARREL-FORM BIRDCAGE WITH BLUE GLAZED WATERPOTS

Mounted to the side of the cage are two shallow porcelain cups for water and birdseed, each beautifully finished with a light blue crackle glaze. The cage opens by a sliding door fitted with a scrollwork carving of two dragons facing a Shou character. A motif repeated in the short feet that elevate the base, this symbolizes longevity and is considered a blessing for a long and complete life.

From the collection of Frances and Gary Comer.

Due to its fragility, this item is only available via white glove delivery or local pickup.

Porcelain water pots and other accessories will be packaged separately during shipping.

