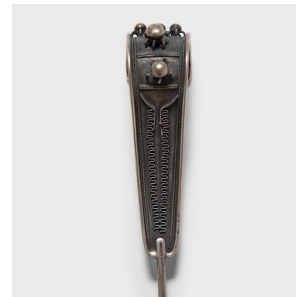

PAGODA RED



LARGE SILVER DECO HAIRPIN

\$118

c. 1930 • China • Silver • Collection #ZZZ041D

W: 1.0" D: 1.25" H: 9.75"

Although eyes were certainly drawn to the high, fan-shaped headdresses that Qing-dynasty women affixed to back of their heads, it was the finishing touch of a hairpin or two that completed the look. Likely worn alongside several additional pins, this large silver hairpin has a curved end decorated with geometric patterns and stylized bead-like flowers. Created amid the Art Deco boom in major cities such as Shanghai, Tianjin, and Canton, this elegant pin would have been a trendy addition to traditional and modern hairstyles alike.



1740 W. Webster Ave., Chicago, IL 60614 • 773-235-1188 • info@pagodared.com

PAGODARED.COM