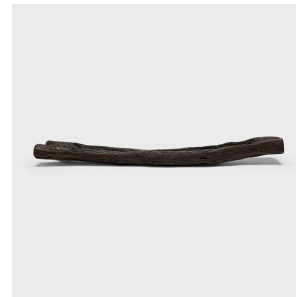
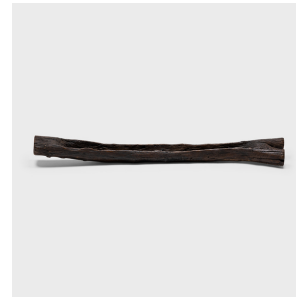

PAGODA RED



MOUNTAIN TROUGH

\$1,280

c. 1900 • Shanxi, China • Pine • Collection #TLB113

W: 59.0" D: 10.0" H: 5.0"

This elmwood farm trough from China's Shanxi province charms with its asymmetrical form and dark wax finish. A common sight throughout rural Qing-dynasty China, a provincial trough such as this would have held grain for livestock and barnyard fowl. The rustic trough showcases the expressive grain and raw texture of Chinese elmwood, deeply weathered by a century of use. With its shallow basin, the trough makes a wonderful tabletop planter, perfect for colorful twinkling candles or orchids and other lush succulents.



1740 W. Webster Ave., Chicago, IL 60614 • 773-235-1188 • info@pagodared.com

PAGODARED.COM