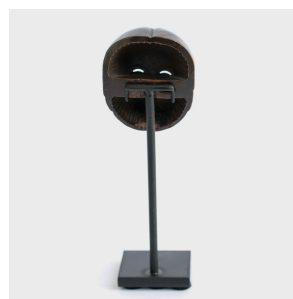
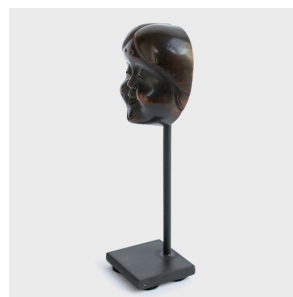
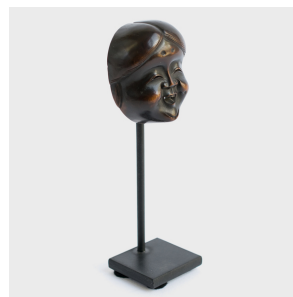
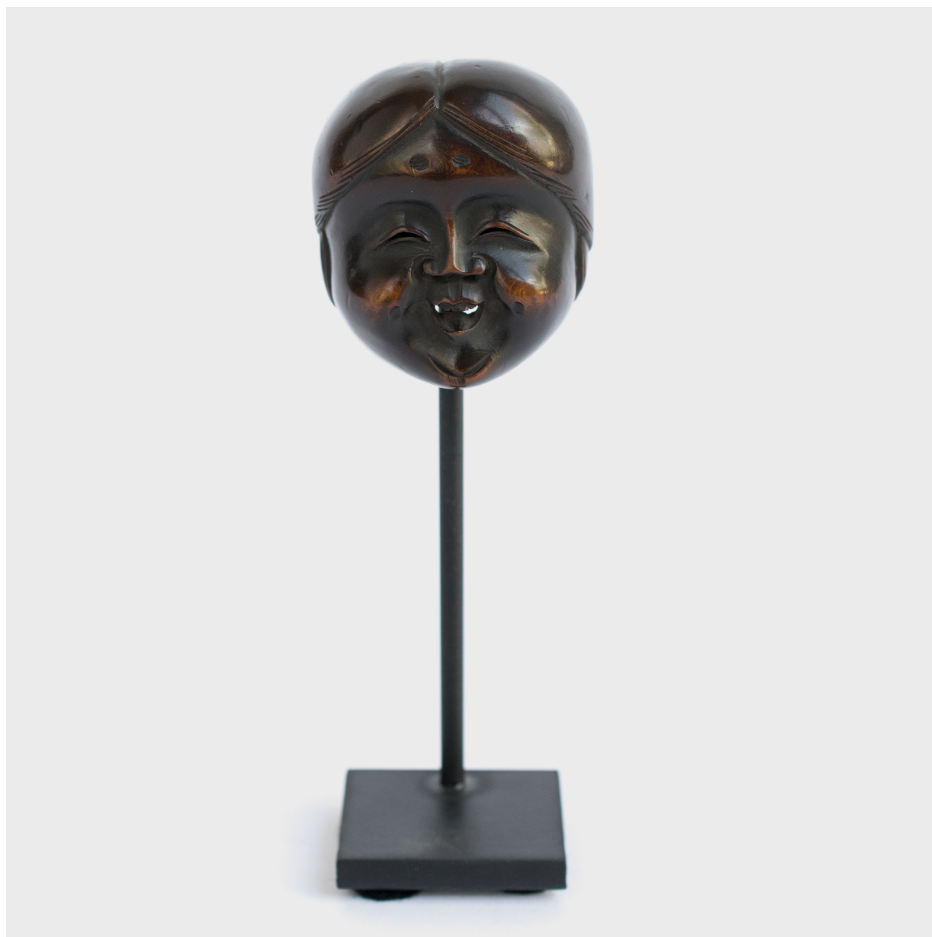

PAGODA RED



OKAME WOMAN NETSUKE

\$2,480

c. 1900 • Japan • Boxwood, Steel • Collection #CLP004

W: 2.0" D: 1.5" H: 5.75"

This netsuke (or button-like toggle) would once have hung from the drawstring of a small pouch or bag, which Japanese men wore at their waist. Although it had a practical purpose, this charming bead has exquisite detail and has developed a deep rich patina. This miniature masterpiece was carved to look like a charmed old woman with a warm and open smile, and dates to Japan's Edo Period (1615–1912) and sits on a custom steel mount.



1740 W. Webster Ave., Chicago, IL 60614 • 773-235-1188 • info@pagodared.com

PAGODARED.COM